

PACO02278

Product Information

Size:

50ug

Reactivity:

Mouse, Rat

Source:

Rabbit

Isotype:

IgG

Applications:

ELISA, WB, IF

Recommended dilutions:

WB:1:500-1:2000, IF:1:200-1:1000

Protein Background:**Gene ID:**

Ccr2

Uniprot

P51683

Synonyms:

CCR2; CMKBR2; C-C chemokine receptor type 2; C-C CKR-2; CC-CKR-2; CCR-2; CCR2; Monocyte chemoattractant protein 1 receptor; MCP-1-R; CD antigen CD192

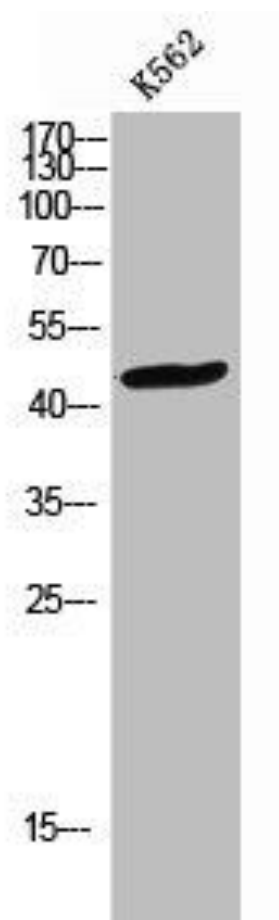
Immunogen:

Synthesized peptide derived from the C-terminal region of human CKR-2.

Storage:

Liquid in PBS containing 50% glycerol, 0.5% BSA and 0.02% sodium azide.

Product Images



Western Blot analysis of K562 cells using CKR-2 Polyclonal Antibody.