

# BMP6 Antibody



PACO02271

---

## Product Information

**Size:**

50ug

**Reactivity:**

Human, Mouse, Rat

**Source:**

Rabbit

**Isotype:**

IgG

**Applications:**

ELISA, WB

**Recommended dilutions:**

WB:1:500-1:2000

**Protein Background:****Gene ID:**

BMP6

**Uniprot**

P22004

**Synonyms:**

BMP6; VGR; Bone morphogenetic protein 6; BMP-6; VG-1-related protein; VG-1-R; VGR-1

**Immunogen:**

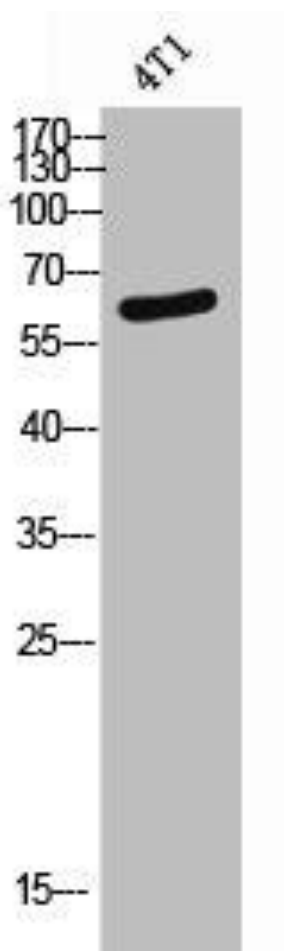
Synthesized peptide derived from the Internal region of human BMP-6.

**Storage:**

Liquid in PBS containing 50% glycerol, 0.5% BSA and 0.02% sodium azide.

## Product Images

---



Western Blot analysis of 4T1 cells using BMP-6 Polyclonal Antibody.