

ATP1B3 Antibody



PACO02264

Product Information

Size:

50ug

Reactivity:

Human

Source:

Rabbit

Isotype:

IgG

Applications:

ELISA, WB

Recommended dilutions:

WB:1:500-1:2000

Protein Background:

Gene ID:

ATP1B3

Uniprot

P54709

Synonyms:

ATP1B3; Sodium/potassium-transporting ATPase subunit beta-3; Sodium/potassium-dependent ATPase subunit beta-3; ATPB-3; CD298

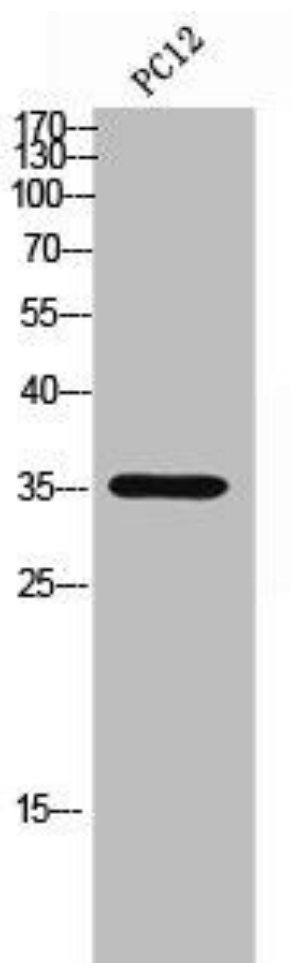
Immunogen:

Synthesized peptide derived from the C-terminal region of human CD298.

Storage:

Liquid in PBS containing 50% glycerol, 0.5% BSA and 0.02% sodium azide.

Product Images



Western Blot analysis of PC12 cells using CD298 Polyclonal Antibody.