

LIFR Antibody



PACO02255

Product Information

Size:

50ug

Reactivity:

Human

Source:

Rabbit

Isotype:

IgG

Applications:

ELISA, WB

Recommended dilutions:

WB:1:500-1:2000

Protein Background:

Gene ID:

LIFR

Uniprot

P42702

Synonyms:

LIFR; Leukemia inhibitory factor receptor; LIF receptor; LIF-R; CD118

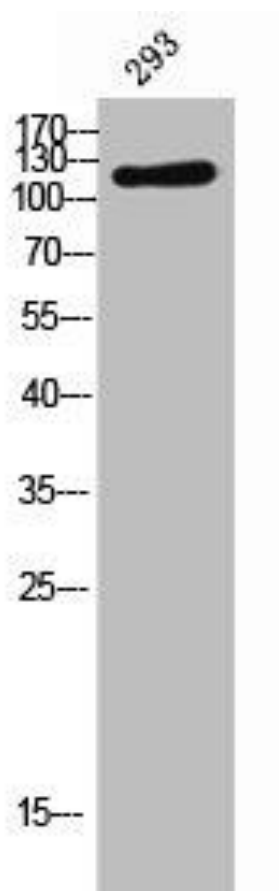
Immunogen:

Synthesized peptide derived from the Internal region of human LIFR.

Storage:

Liquid in PBS containing 50% glycerol, 0.5% BSA and 0.02% sodium azide.

Product Images



Western Blot analysis of 293 cells using LIFR Polyclonal Antibody.