

LILRB2 Antibody



PACO02251

Product Information

Size:

50ug

Reactivity:

Human

Source:

Rabbit

Isotype:

IgG

Applications:

ELISA, WB

Recommended dilutions:

WB:1:500-1:2000

Protein Background:

Gene ID:

LILRB2

Uniprot

Q8N423

Synonyms:

LILRB2; ILT4; LIR2; MIR10; Leukocyte immunoglobulin-like receptor subfamily B member 2; LIR-2; Leukocyte immunoglobulin-like receptor 2; CD85 antigen-like family member D; Immunoglobulin-like transcript 4; ILT-4; Monocyte/macrophage immunoglobulin-like re

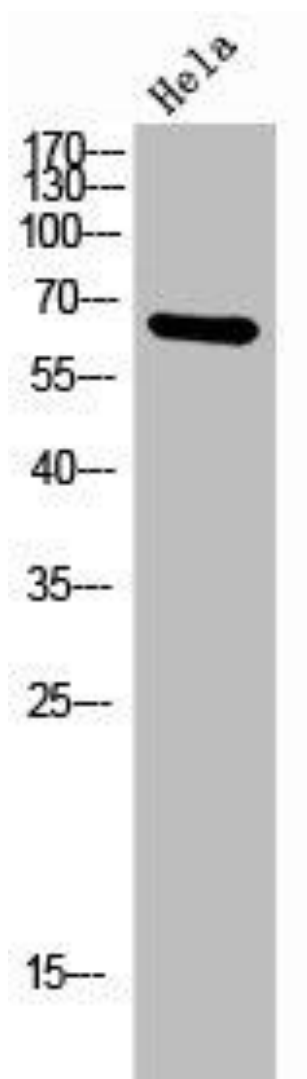
Immunogen:

Synthesized peptide derived from the Internal region of human CD85d.

Storage:

Liquid in PBS containing 50% glycerol, 0.5% BSA and 0.02% sodium azide.

Product Images



Western Blot analysis of HeLa cells using CD85d Polyclonal Antibody.