

# GABRA1 Antibody



PACO02234

---

## Product Information

**Size:**

50ug

**Reactivity:**

Human, Mouse, Rat

**Source:**

Rabbit

**Isotype:**

IgG

**Applications:**

ELISA, WB

**Recommended dilutions:**

WB:1:500-1:2000

**Protein Background:**

**Gene ID:**

GABRA1

**Uniprot**

P14867

**Synonyms:**

GABRA1; Gamma-aminobutyric acid receptor subunit alpha-1; GABA(A) receptor subunit alpha-1

**Immunogen:**

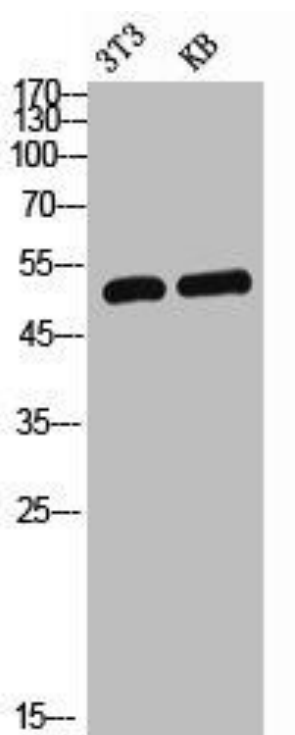
Synthesized peptide derived from the Internal region of human GABAA Ralpha1.

**Storage:**

Liquid in PBS containing 50% glycerol, 0.5% BSA and 0.02% sodium azide.

## Product Images

---



Western Blot analysis of NIH-3T3 KB cells using GABAA Ralpha1 Polyclonal Antibody.