

STRA8 Antibody



PACO02222

Product Information

Size:

50ug

Reactivity:

Human

Source:

Rabbit

Isotype:

IgG

Applications:

ELISA, WB

Recommended dilutions:

WB:1:500-1:2000

Protein Background:

Gene ID:

STRA8

Uniprot

Q7Z7C7

Synonyms:

STRA8; Stimulated by retinoic acid gene 8 protein homolog

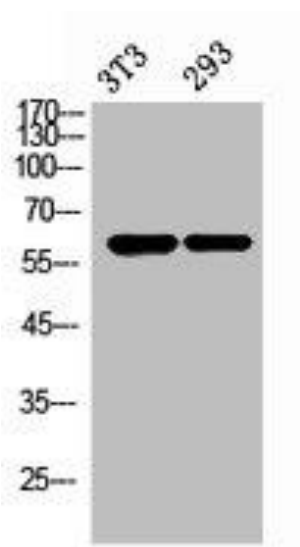
Immunogen:

Synthesized peptide derived from the Internal region of human Stra8.

Storage:

Liquid in PBS containing 50% glycerol, 0.5% BSA and 0.02% sodium azide.

Product Images



Western Blot analysis of NIH-3T3, 293 cells using Stra8 Polyclonal Antibody.