

STAT1 Antibody



PACO02206

Product Information

Size:

50ug

Reactivity:

Human, Mouse, Rat

Source:

Rabbit

Isotype:

IgG

Applications:

ELISA, WB

Recommended dilutions:

WB:1:500-1:2000

Protein Background:

Gene ID:

STAT1

Uniprot

P42224

Synonyms:

STAT1; Signal transducer and activator of transcription 1-alpha/beta; Transcription factor ISGF-3 components p91/p84

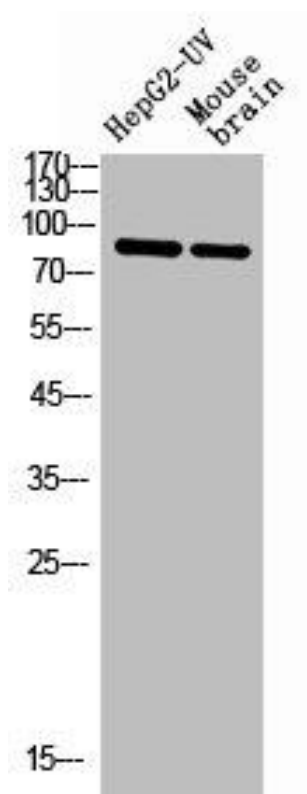
Immunogen:

Synthesized peptide derived from the Internal region of human Stat1.

Storage:

Liquid in PBS containing 50% glycerol, 0.5% BSA and 0.02% sodium azide.

Product Images



Western Blot analysis of HepG2-UV mouse brain cells using Stat1 Polyclonal Antibody.