

RSAD2 Antibody



PACO02201

Product Information

Size:

50ug

Reactivity:

Human

Source:

Rabbit

Isotype:

IgG

Applications:

ELISA, WB

Recommended dilutions:

WB:1:500-1:2000

Protein Background:**Gene ID:**

RSAD2

Uniprot

Q8WXG1

Synonyms:

RSAD2; CIG5; Radical S-adenosyl methionine domain-containing protein 2; Cytomegalovirus-induced gene 5 protein; Viperin; Virus inhibitory protein, endoplasmic reticulum-associated, interferon-inducible

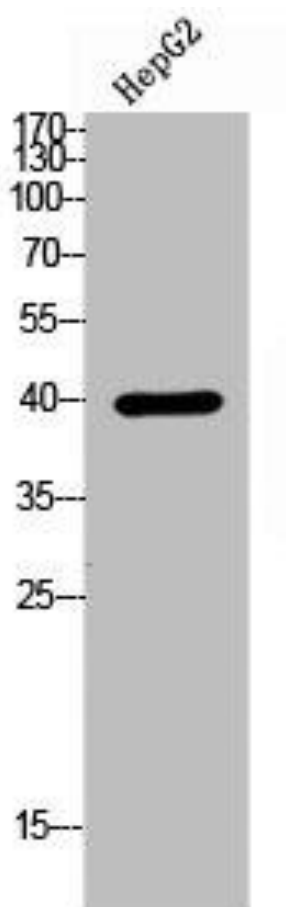
Immunogen:

Synthesized peptide derived from the N-terminal region of human RSAD2.

Storage:

Liquid in PBS containing 50% glycerol, 0.5% BSA and 0.02% sodium azide.

Product Images



Western Blot analysis of HepG2 cells using RSAD2 Polyclonal Antibody.