

PACO02197

Product Information

Size:

50ug

Reactivity:

Human, Mouse, Rat

Source:

Rabbit

Isotype:

IgG

Applications:

ELISA, WB

Recommended dilutions:

WB:1:500-1:2000

Protein Background:**Gene ID:**

GFER

Uniprot

P55789

Synonyms:

GFER; ALR; HERV1; HPO; FAD-linked sulfhydryl oxidase ALR; Augmenter of liver regeneration; hERV1; Hepatopoietin

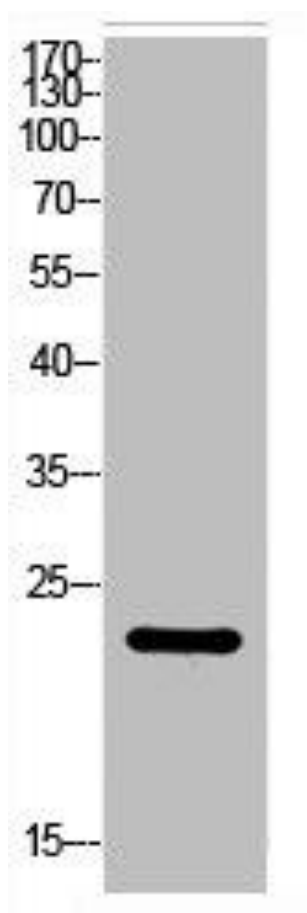
Immunogen:

Synthesized peptide derived from the Internal region of human ALR.

Storage:

Liquid in PBS containing 50% glycerol, 0.5% BSA and 0.02% sodium azide.

Product Images



Western Blot analysis of HBE cells using ALR Polyclonal Antibody.