

SLC2A4 Antibody



PACO02191

Product Information

Size:

50ug

Reactivity:

Human, Mouse, Rat

Source:

Rabbit

Isotype:

IgG

Applications:

ELISA, WB

Recommended dilutions:

WB:1:500-1:2000

Protein Background:

Gene ID:

SLC2A4

Uniprot

P14672

Synonyms:

SLC2A4; GLUT4; Solute carrier family 2, facilitated glucose transporter member 4; Glucose transporter type 4, insulin-responsive; GLUT-4

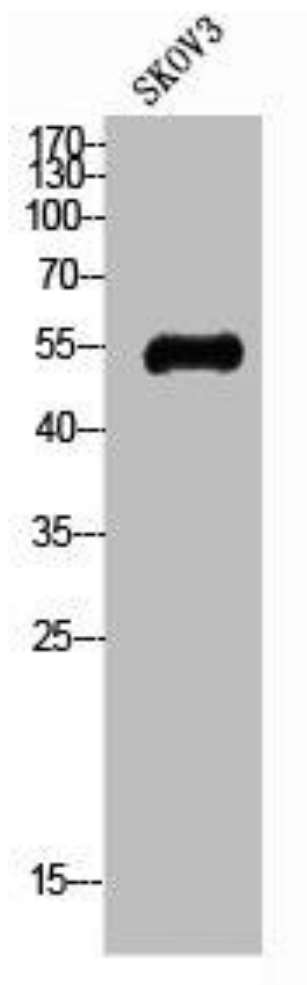
Immunogen:

Synthesized peptide derived from the N-terminal region of human Glut4.

Storage:

Liquid in PBS containing 50% glycerol, 0.5% BSA and 0.02% sodium azide.

Product Images



Western Blot analysis of SKOV3 cells using Glut4 Polyclonal Antibody.