

# IL18R1 Antibody



PACO02147

---

## Product Information

**Size:**

50ug

**Reactivity:**

Human

**Source:**

Rabbit

**Isotype:**

IgG

**Applications:**

ELISA, WB

**Recommended dilutions:**

WB:1:500-1:2000

**Protein Background:**

**Gene ID:**

IL18R1

**Uniprot**

Q13478

**Synonyms:**

IL18R1; IL1RRP; Interleukin-18 receptor 1; IL-18R-1; IL-18R1; CD218 antigen-like family member A; CDw218a; IL1 receptor-related protein; IL-1Rrp; IL1R-rp; CD218a

**Immunogen:**

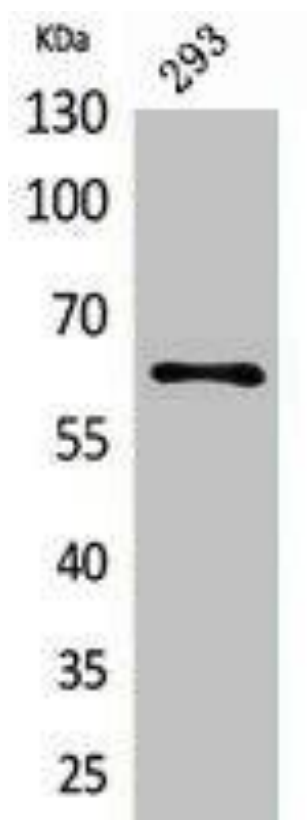
Synthesized peptide derived from the Internal region of human IL-18R.

**Storage:**

Liquid in PBS containing 50% glycerol, 0.5% BSA and 0.02% sodium azide.

## Product Images

---



Western Blot analysis of 293 cells using IL-18R Polyclonal Antibody.