

LILRA5 Antibody



PACO02140

Product Information

Size:

50ug

Reactivity:

Human

Source:

Rabbit

Isotype:

IgG

Applications:

ELISA, WB

Recommended dilutions:

WB:1:500-1:2000

Protein Background:**Gene ID:**

LILRA5

Uniprot

A6NI73

Synonyms:

LILRA5; ILT11; LILRB7; LIR9; Leukocyte immunoglobulin-like receptor subfamily A member 5; CD85 antigen-like family member F; Immunoglobulin-like transcript 11; ILT-11; Leukocyte immunoglobulin-like receptor 9; LIR-9; CD85f

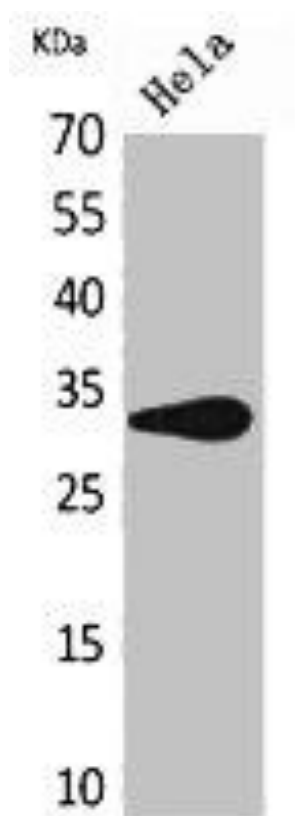
Immunogen:

Synthesized peptide derived from the Internal region of human CD85f.

Storage:

Liquid in PBS containing 50% glycerol, 0.5% BSA and 0.02% sodium azide.

Product Images



Western Blot analysis of HeLa cells using CD85f Polyclonal Antibody.