

CD37 Antibody



PACO02137

Product Information

Size:

50ug

Reactivity:

Human

Source:

Rabbit

Isotype:

IgG

Applications:

ELISA, WB

Recommended dilutions:

WB:1:500-1:2000

Protein Background:

Gene ID:

CD37

Uniprot

P11049

Synonyms:

CD37; TSPAN26; Leukocyte antigen CD37; Tetraspanin-26; Tspan-26; CD37

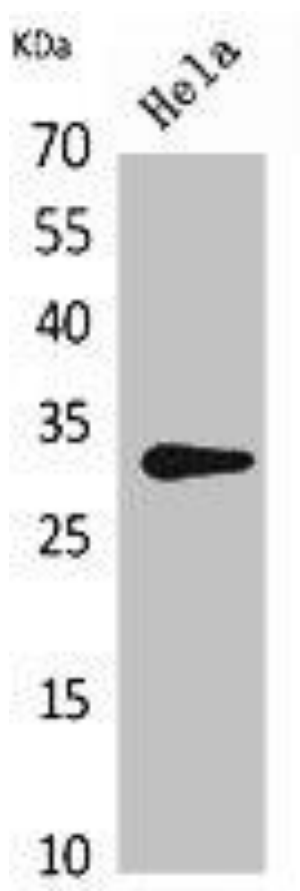
Immunogen:

Synthesized peptide derived from the Internal region of human CD37.

Storage:

Liquid in PBS containing 50% glycerol, 0.5% BSA and 0.02% sodium azide.

Product Images



Western Blot analysis of HeLa cells using CD37 Polyclonal Antibody.