

ITGB2 Antibody



PACO02136

Product Information

Size:

50ug

Reactivity:

Human

Source:

Rabbit

Isotype:

IgG

Applications:

ELISA, WB

Recommended dilutions:

WB:1:500-1:2000

Protein Background:

Gene ID:

ITGB2

Uniprot

P05107

Synonyms:

ITGB2; CD18; MFI7; Integrin beta-2; Cell surface adhesion glycoproteins LFA-1/CR3/p150,95 subunit beta; Complement receptor C3 subunit beta; CD18

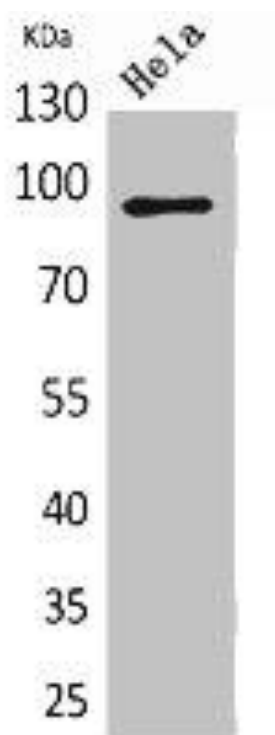
Immunogen:

Synthesized peptide derived from the Internal region of human Integrin Beta2.

Storage:

Liquid in PBS containing 50% glycerol, 0.5% BSA and 0.02% sodium azide.

Product Images



Western Blot analysis of HeLa cells using Integrin Beta2 Polyclonal Antibody.