

ITGAD Antibody



PACO02135

Product Information

Size:

50ug

Reactivity:

Human

Source:

Rabbit

Isotype:

IgG

Applications:

ELISA, WB

Recommended dilutions:

WB:1:500-1:2000

Protein Background:

Gene ID:

ITGAD

Uniprot

Q13349

Synonyms:

ITGAD; Integrin alpha-D; ADB2; CD11 antigen-like family member D; Leukointegrin alpha D; CD11d

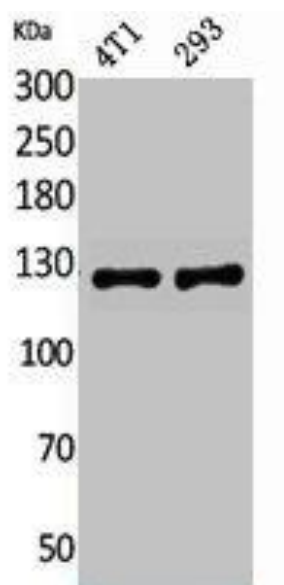
Immunogen:

Synthesized peptide derived from the Internal region of human Integrin alphaD.

Storage:

Liquid in PBS containing 50% glycerol, 0.5% BSA and 0.02% sodium azide.

Product Images



Western Blot analysis of 4T1, 293 cells using Integrin alphaD Polyclonal Antibody.