

KLK1 Antibody



PACO02125

Product Information

Size:

50ug

Reactivity:

Human

Source:

Rabbit

Isotype:

IgG

Applications:

ELISA, WB

Recommended dilutions:

WB:1:500-1:2000

Protein Background:

Gene ID:

KLK1

Uniprot

P06870

Synonyms:

KLK1; Kallikrein-1; Kidney/pancreas/salivary gland kallikrein; Tissue kallikrein

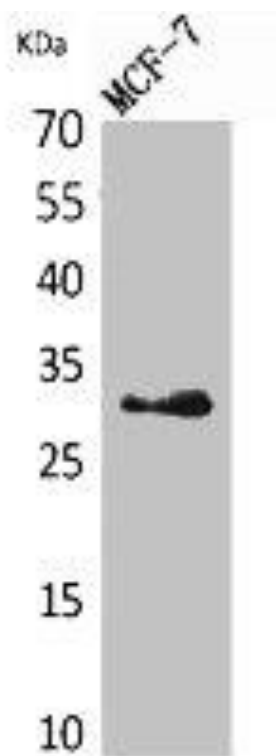
Immunogen:

Synthesized peptide derived from the Internal region of human KLK1.

Storage:

Liquid in PBS containing 50% glycerol, 0.5% BSA and 0.02% sodium azide.

Product Images



Western Blot analysis of MCF7 cells using KLK1 Polyclonal Antibody.