

# GPR87 Antibody



PACO02114

---

## Product Information

**Size:**

50ug

**Reactivity:**

Human

**Source:**

Rabbit

**Isotype:**

IgG

**Applications:**

ELISA, WB

**Recommended dilutions:**

WB:1:500-1:2000

**Protein Background:****Gene ID:**

GPR87

**Uniprot**

Q9BY21

**Synonyms:**

GPR87; GPR95; FKSG78; G-protein coupled receptor 87; G-protein coupled receptor 95

**Immunogen:**

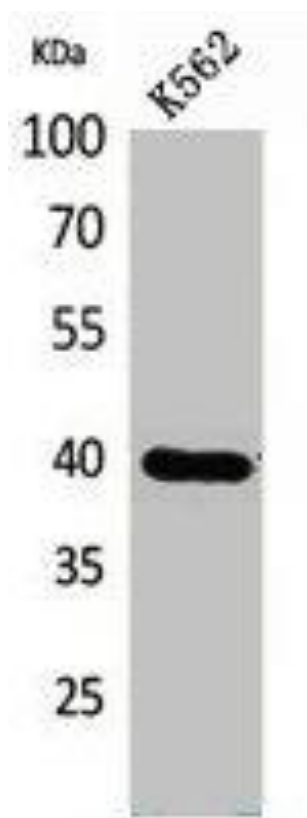
Synthesized peptide derived from the N-terminal region of human GPR87/95.

**Storage:**

Liquid in PBS containing 50% glycerol, 0.5% BSA and 0.02% sodium azide.

## Product Images

---



Western Blot analysis of K562 cells using GPR87/95 Polyclonal Antibody.