

**MYH1/MYH2/MYH3/MYH4/MYH6/MYH7/MYH8
Antibody
PACO02108**



Product Information

Size:

50ug

Reactivity:

Human, Mouse, Rat

Source:

Rabbit

Isotype:

IgG

Applications:

ELISA, WB

Recommended dilutions:

WB:1:500-1:2000

Protein Background:

Gene ID:

MYH1/MYH2/MYH3/MYH4/MYH6/MYH7/MYH8

Uniprot

P12882/Q9UKX2/P11055/Q9Y623/P13533/P12883/P13535

Synonyms:

MYH1; Myosin-1; Myosin heavy chain 1; Myosin heavy chain 2x; MyHC-2x; Myosin heavy chain IIx/d; MyHC-IIx/d; Myosin heavy chain, skeletal muscle, adult 1; MYH2; MYHSA2; Myosin-2; Myosin heavy chain 2

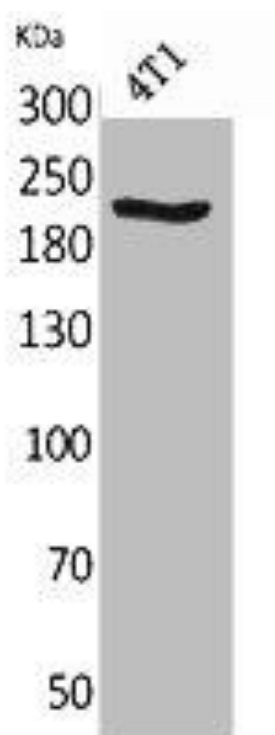
Immunogen:

Synthesized peptide derived from human MYH-pan around the non-acetylation site of K1394.

Storage:

Liquid in PBS containing 50% glycerol, 0.5% BSA and 0.02% sodium azide.

Product Images



Western Blot analysis of 4T1 cells using MYH-pan Polyclonal Antibody.