

SLC26A3 Antibody



PACO02102

Product Information

Size:

50ug

Reactivity:

Human, Mouse, Rat

Source:

Rabbit

Isotype:

IgG

Applications:

ELISA, WB

Recommended dilutions:

WB:1:500-1:2000

Protein Background:

Gene ID:

SLC26A3

Uniprot

P40879

Synonyms:

SLC26A3; DRA; Chloride anion exchanger; Down-regulated in adenoma; Protein DRA; Solute carrier family 26 member 3

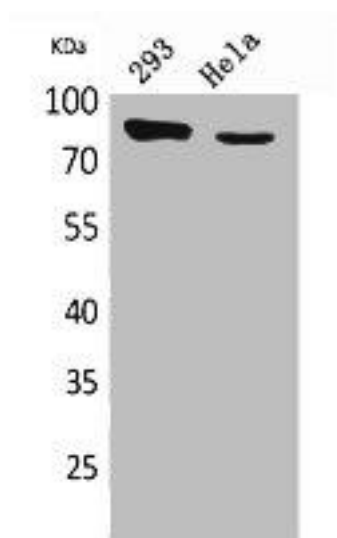
Immunogen:

Synthesized peptide derived from the C-terminal region of human DRA.

Storage:

Liquid in PBS containing 50% glycerol, 0.5% BSA and 0.02% sodium azide.

Product Images



Western Blot analysis of 293, HeLa cells using DRA Polyclonal Antibody.