

IDH1 Antibody



PACO02101

Product Information

Size:

50ug

Reactivity:

Human, Mouse, Rat

Source:

Rabbit

Isotype:

IgG

Applications:

ELISA, WB

Recommended dilutions:

WB:1:500-1:2000

Protein Background:

Gene ID:

IDH1

Uniprot

O75874

Synonyms:

IDH1; PICD; Isocitrate dehydrogenase [NADP] cytoplasmic; IDH; Cytosolic NADP-isocitrate dehydrogenase; IDP; NADP(+)-specific ICDH; Oxalosuccinate decarboxylase

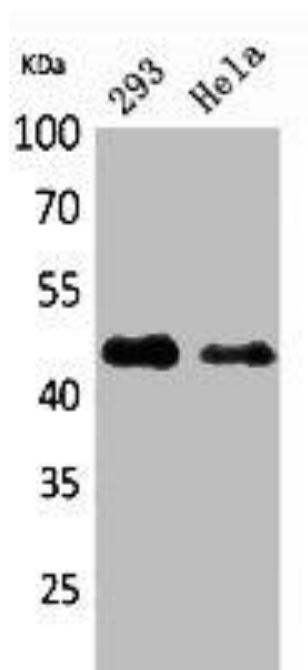
Immunogen:

Synthesized peptide derived from the N-terminal region of human IDH1.

Storage:

Liquid in PBS containing 50% glycerol, 0.5% BSA and 0.02% sodium azide.

Product Images



Western Blot analysis of 293, HeLa cells using IDH1 Polyclonal Antibody.