

INHBA Antibody



PACO02094

Product Information

Size:

50ug

Reactivity:

Human, Mouse, Rat

Source:

Rabbit

Isotype:

IgG

Applications:

ELISA, WB

Recommended dilutions:

WB:1:500-1:2000

Protein Background:

Gene ID:

INHBA

Uniprot

P08476

Synonyms:

INHBA; Inhibin beta A chain; Activin beta-A chain; Erythroid differentiation protein; EDF

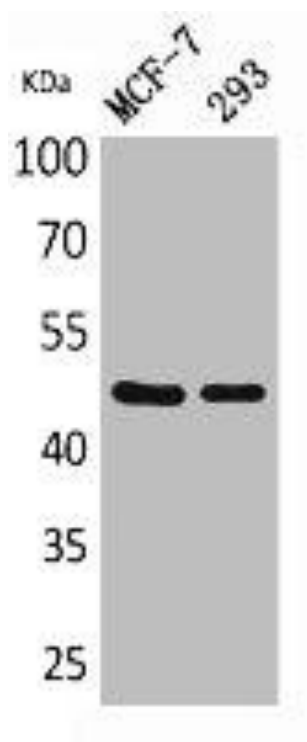
Immunogen:

Synthesized peptide derived from the C-terminal region of human Inhibin Beta-A.

Storage:

Liquid in PBS containing 50% glycerol, 0.5% BSA and 0.02% sodium azide.

Product Images



Western Blot analysis of MCF-7, 293 cells using Inhibin Beta-A Polyclonal Antibody.