

# CD163L1 Antibody



PACO02092

---

## Product Information

**Size:**

50ug

**Reactivity:**

Human

**Source:**

Rabbit

**Isotype:**

IgG

**Applications:**

ELISA, WB

**Recommended dilutions:**

WB:1:500-1:2000

**Protein Background:**

**Gene ID:**

CD163L1

**Uniprot**

Q9NR16

**Synonyms:**

CD163L1; CD163B; M160; Scavenger receptor cysteine-rich type 1 protein M160; CD163 antigen-like 1; CD163b

**Immunogen:**

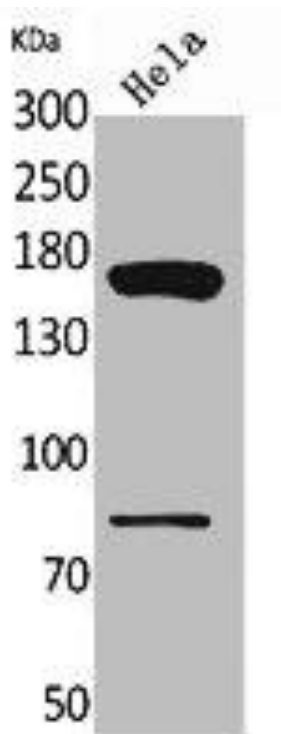
Synthesized peptide derived from the Internal region of human CD163b.

**Storage:**

Liquid in PBS containing 50% glycerol, 0.5% BSA and 0.02% sodium azide.

## Product Images

---



Western Blot analysis of HeLa cells using CD163b Polyclonal Antibody.