

# CD226 Antibody



PACO02088

---

## Product Information

**Size:**

50ug

**Reactivity:**

Human

**Source:**

Rabbit

**Isotype:**

IgG

**Applications:**

ELISA, WB

**Recommended dilutions:**

WB:1:500-1:2000

**Protein Background:**

**Gene ID:**

CD226

**Uniprot**

Q15762

**Synonyms:**

CD226; DNAM1; CD226 antigen; DNAX accessory molecule 1; DNAM-1; CD226

**Immunogen:**

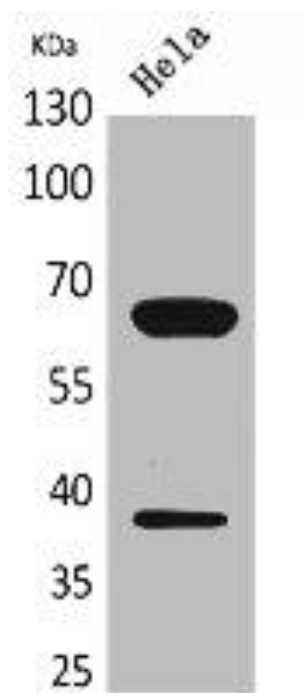
Synthesized peptide derived from the Internal region of human DNAM-1.

**Storage:**

Liquid in PBS containing 50% glycerol, 0.5% BSA and 0.02% sodium azide.

## Product Images

---



Western Blot analysis of HeLa cells using DNAM-1 Polyclonal Antibody.