

# SIGLEC1 Antibody



PACO02085

---

## Product Information

**Size:**

50ug

**Reactivity:**

Human

**Source:**

Rabbit

**Isotype:**

IgG

**Applications:**

ELISA, WB

**Recommended dilutions:**

WB:1:500-1:2000

**Protein Background:**

**Gene ID:**

SIGLEC1

**Uniprot**

Q9BZZ2

**Synonyms:**

SIGLEC1; SN; Sialoadhesin; Sialic acid-binding Ig-like lectin 1; Siglec-1; CD169

**Immunogen:**

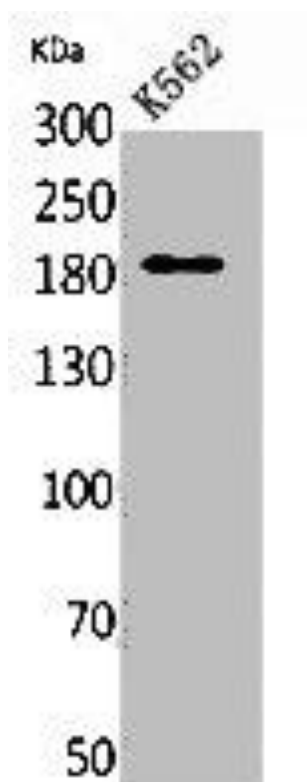
Synthesized peptide derived from the Internal region of human CD169.

**Storage:**

Liquid in PBS containing 50% glycerol, 0.5% BSA and 0.02% sodium azide.

## Product Images

---



Western Blot analysis of K562 cells using CD169 Polyclonal Antibody.