

# CGRRF1 Antibody



PACO02054

---

## Product Information

**Size:**

50ug

**Reactivity:**

Human

**Source:**

Rabbit

**Isotype:**

IgG

**Applications:**

ELISA, WB

**Recommended dilutions:**

WB:1:500-1:2000

**Protein Background:**

**Gene ID:**

CGRRF1

**Uniprot**

Q99675

**Synonyms:**

CGRRF1; CGR19; RNF197; Cell growth regulator with RING finger domain protein 1; Cell growth regulatory gene 19 protein; RING finger protein 197

**Immunogen:**

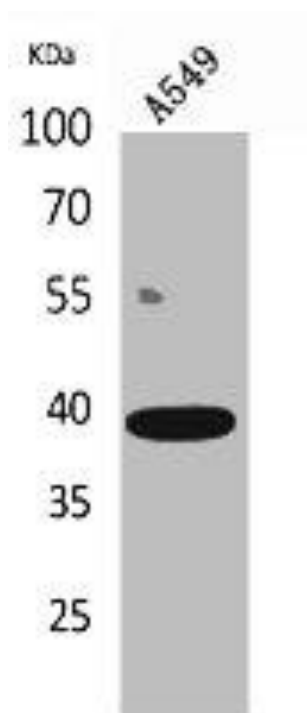
Synthesized peptide derived from the C-terminal region of human CGR19.

**Storage:**

Liquid in PBS containing 50% glycerol, 0.5% BSA and 0.02% sodium azide.

## Product Images

---



Western Blot analysis of A549 cells using CGR19 Polyclonal Antibody.