

KLF13 Antibody



PACO02026

Product Information

Size:

50ug

Reactivity:

Human, Mouse

Source:

Rabbit

Isotype:

IgG

Applications:

ELISA, WB

Recommended dilutions:

WB:1:500-1:2000

Protein Background:**Gene ID:**

KLF13

Uniprot

Q9Y2Y9

Synonyms:

KLF13; BTEB3; NSLP1; Krueppel-like factor 13; Basic transcription element-binding protein 3; BTE-binding protein 3; Novel Sp1-like zinc finger transcription factor 1;

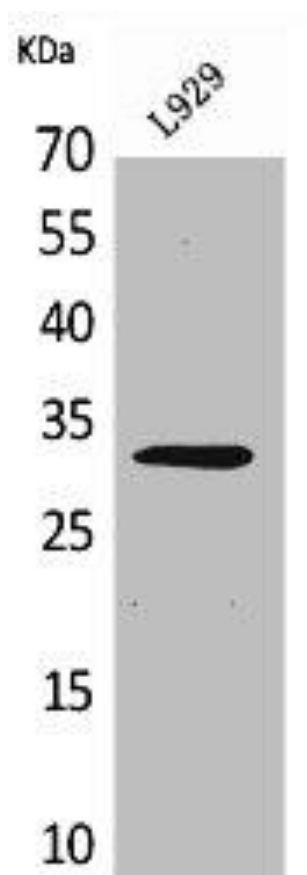
Immunogen:

Synthesized peptide derived from human KLF13 around the non-acetylation site of K166.

Storage:

Liquid in PBS containing 50% glycerol, 0.5% BSA and 0.02% sodium azide.

Product Images



Western Blot analysis of L929 cells using KLF13 Polyclonal Antibody.