

# E2F4 Antibody



PACO02019

---

## Product Information

**Size:**

50ug

**Reactivity:**

Human, Mouse, Rat

**Source:**

Rabbit

**Isotype:**

IgG

**Applications:**

ELISA, WB

**Recommended dilutions:**

WB:1:500-1:2000

**Protein Background:**

**Gene ID:**

E2F4

**Uniprot**

Q16254

**Synonyms:**

E2F4; Transcription factor E2F4; E2F-4

**Immunogen:**

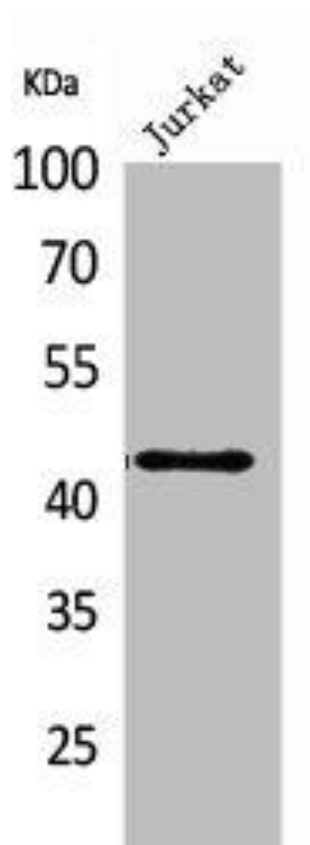
Synthesized peptide derived from human E2F-4 around the non-acetylation site of K96.

**Storage:**

Liquid in PBS containing 50% glycerol, 0.5% BSA and 0.02% sodium azide.

## Product Images

---



Western Blot analysis of Jurkat cells using E2F-4 Polyclonal Antibody.