

GDF9 Antibody



PACO02001

Product Information

Size:

50ug

Reactivity:

Human, Mouse, Rat

Source:

Rabbit

Isotype:

IgG

Applications:

ELISA, WB

Recommended dilutions:

WB:1:500-1:2000

Protein Background:**Gene ID:**

GDF9

Uniprot

O60383

Synonyms:

GDF9; Growth/differentiation factor 9; GDF-9

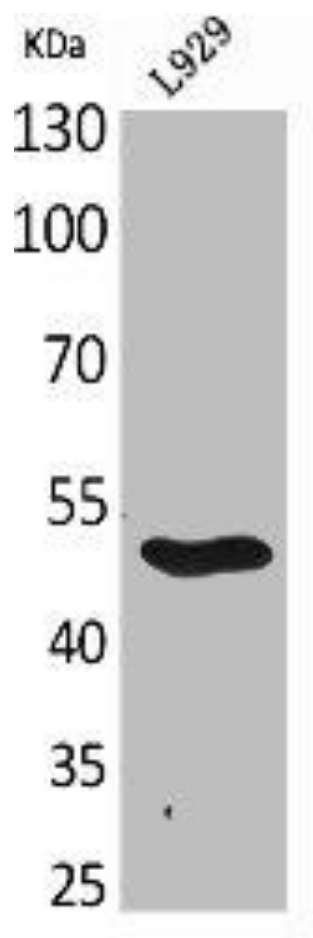
Immunogen:

Synthesized peptide derived from the C-terminal region of human GDF-9.

Storage:

Liquid in PBS containing 50% glycerol, 0.5% BSA and 0.02% sodium azide.

Product Images



Western Blot analysis of L929 cells using GDF-9 Polyclonal Antibody.