

PDGFD Antibody



PACO01999

Product Information

Size:

50ug

Reactivity:

Human

Source:

Rabbit

Isotype:

IgG

Applications:

ELISA, WB

Recommended dilutions:

WB:1:500-1:2000

Protein Background:

Gene ID:

PDGFD

Uniprot

Q9GZP0

Synonyms:

PDGFD; IEGF; SCDGFB; MSTP036; Platelet-derived growth factor D; PDGF-D; Iris-expressed growth factor; Spinal cord-derived growth factor B; SCDGF-B

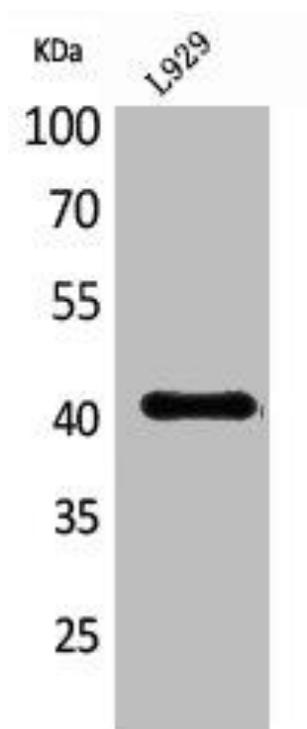
Immunogen:

Synthesized peptide derived from the C-terminal region of human PDGF-D.

Storage:

Liquid in PBS containing 50% glycerol, 0.5% BSA and 0.02% sodium azide.

Product Images



Western Blot analysis of L929 cells using PDGF-D Polyclonal Antibody.