

PACO01994

---

## Product Information

**Size:**

50ug

**Reactivity:**

Human, Mouse

**Source:**

Rabbit

**Isotype:**

IgG

**Applications:**

ELISA, WB

**Recommended dilutions:**

WB:1:500-1:2000

**Protein Background:****Gene ID:**

OGN

**Uniprot**

P20774

**Synonyms:**

OGN; OIF; SLRR3A; Mimecan; Osteoglycin; Osteoinductive factor; OIF

**Immunogen:**

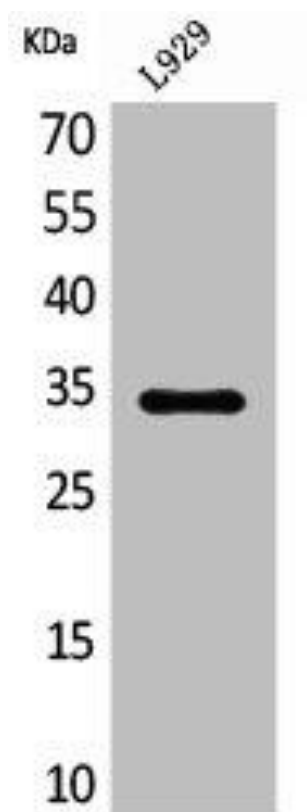
Synthesized peptide derived from the C-terminal region of human Osteoglycin.

**Storage:**

Liquid in PBS containing 50% glycerol, 0.5% BSA and 0.02% sodium azide.

## Product Images

---



Western Blot analysis of L929 cells using Osteoglycin Polyclonal Antibody.