

CCL8 Antibody



PACO01993

Product Information

Size:

50ug

Reactivity:

Human

Source:

Rabbit

Isotype:

IgG

Applications:

ELISA, WB

Recommended dilutions:

WB:1:500-1:2000

Protein Background:

Gene ID:

CCL8

Uniprot

P80075

Synonyms:

CCL8; MCP2; SCYA10; SCYA8; C-C motif chemokine 8; HC14; Monocyte chemoattractant protein 2; Monocyte chemotactic protein 2; MCP-2; Small-inducible cytokine A8

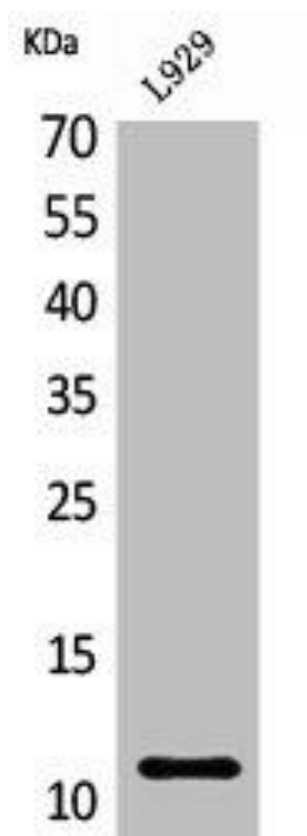
Immunogen:

Synthesized peptide derived from the C-terminal region of human MCP-2.

Storage:

Liquid in PBS containing 50% glycerol, 0.5% BSA and 0.02% sodium azide.

Product Images



Western Blot analysis of L929 cells using MCP-2 Polyclonal Antibody.