

CD1E Antibody



PACO01948

Product Information

Size:

50ug

Reactivity:

Human

Source:

Rabbit

Isotype:

IgG

Applications:

ELISA, WB

Recommended dilutions:

WB:1:500-1:2000

Protein Background:

Gene ID:

CD1E

Uniprot

P15812

Synonyms:

CD1E; T-cell surface glycoprotein CD1e, membrane-associated; hCD1e; R2G1; CD1e

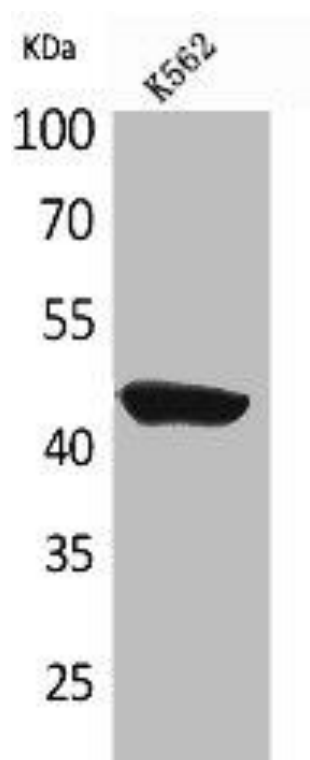
Immunogen:

Synthesized peptide derived from the C-terminal region of human CD1E.

Storage:

Liquid in PBS containing 50% glycerol, 0.5% BSA and 0.02% sodium azide.

Product Images



Western Blot analysis of K562 cells using CD1E Polyclonal Antibody.