

CD68 Antibody



PACO01923

Product Information

Size:

50ug

Reactivity:

Human

Source:

Rabbit

Isotype:

IgG

Applications:

ELISA, WB

Recommended dilutions:

WB:1:500-1:2000

Protein Background:

Gene ID:

CD68

Uniprot

P34810

Synonyms:

CD68; Macrosialin; Gp110; CD68

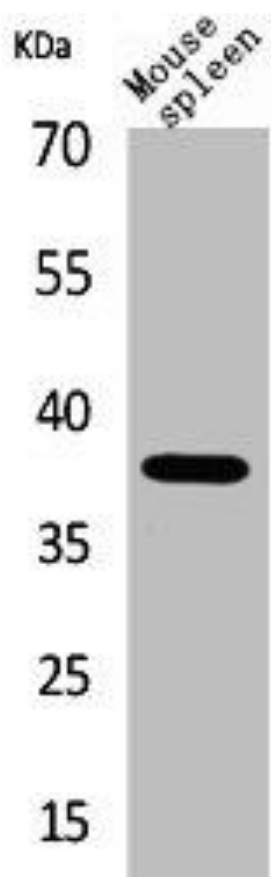
Immunogen:

Synthesized peptide derived from the Internal region of human CD68.

Storage:

Liquid in PBS containing 50% glycerol, 0.5% BSA and 0.02% sodium azide.

Product Images



Western Blot analysis of mouse spleen cells using CD68 Polyclonal Antibody.