

SFTPA2 Antibody



PACO01904

Product Information

Size:

50ug

Reactivity:

Human, Mouse, Rat

Source:

Rabbit

Isotype:

IgG

Applications:

ELISA, WB

Recommended dilutions:

WB:1:500-1:2000

Protein Background:

Gene ID:

SFTPA2

Uniprot

Q8IWL1

Synonyms:

SFTPA2; COLEC5; PSAP; SFTP1; SFTPA; SFTPA2B; Pulmonary surfactant-associated protein A2; PSP-A; PSPA; SP-A; SP-A2; 35 kDa pulmonary surfactant-associated protein; Alveolar proteinosis protein; Collectin-5; SFTPA1; COLEC4; PSAP;

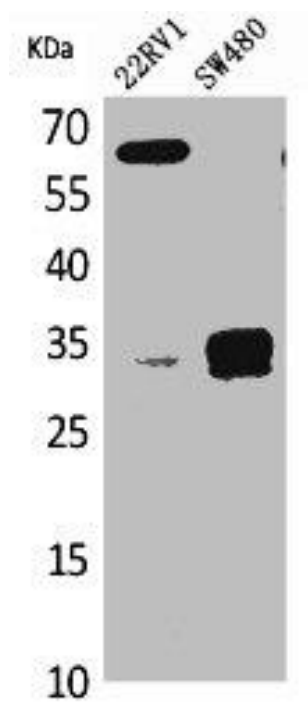
Immunogen:

Synthesized peptide derived from the Internal region of human SP-A.

Storage:

Liquid in PBS containing 50% glycerol, 0.5% BSA and 0.02% sodium azide.

Product Images



Western Blot analysis of K562 mouse lung cells using SP-A Polyclonal Antibody.