

# LMNB1 Antibody



PACO01894

---

## Product Information

**Size:**

50ug

**Reactivity:**

Human, Mouse, Rat

**Source:**

Rabbit

**Isotype:**

IgG

**Applications:**

ELISA, WB

**Recommended dilutions:**

WB:1:500-1:2000

**Protein Background:**

**Gene ID:**

LMNB1

**Uniprot**

P20700

**Synonyms:**

LMNB1; LMN2; LMNB; Lamin-B1

**Immunogen:**

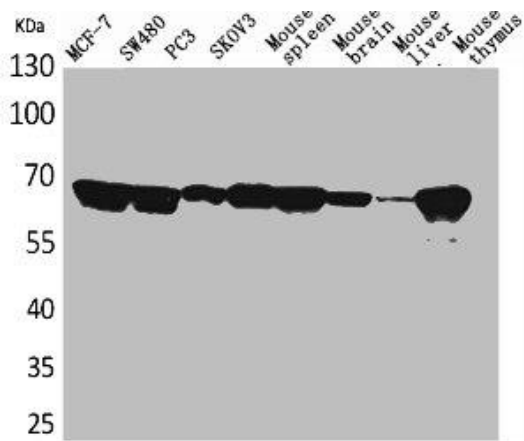
Synthesized peptide derived from the Internal region of human Lamin B1.

**Storage:**

Liquid in PBS containing 50% glycerol, 0.5% BSA and 0.02% sodium azide.

## Product Images

---



Western Blot analysis of MCF7 SW480 PC-3 SKOV3 mouse spleen mouse brain mouse liver mouse thymus cells using Lamin B1 Polyclonal Antibody.