

# PRKCG Antibody



PACO01862

---

## Product Information

**Size:**

50ug

**Reactivity:**

Human, Mouse, Rat

**Source:**

Rabbit

**Isotype:**

IgG

**Applications:**

ELISA, WB

**Recommended dilutions:**

WB:1:500-1:2000

**Protein Background:****Gene ID:**

PRKCG

**Uniprot**

P05129

**Synonyms:**

PRKCG; PKCG; Protein kinase C gamma type; PKC-gamma

**Immunogen:**

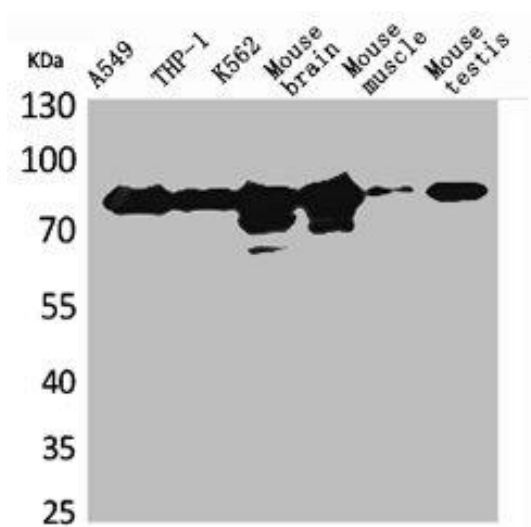
Synthesized peptide derived from the Internal region of human PKC gamma.

**Storage:**

Liquid in PBS containing 50% glycerol, 0.5% BSA and 0.02% sodium azide.

## Product Images

---



Western Blot analysis of A549 THP-1 K562 mouse brain mouse skeletal muscle mouse testis cells using PKC gamma Polyclonal Antibody.