

SCG3 Antibody



PACO01856

Product Information

Size:

50ug

Reactivity:

Human, Rat

Source:

Rabbit

Isotype:

IgG

Applications:

ELISA, WB

Recommended dilutions:

WB:1:500-1:2000

Protein Background:

Gene ID:

SCG3

Uniprot

Q8WXD2

Synonyms:

SCG3; Secretogranin-3; Secretogranin III; SgIII

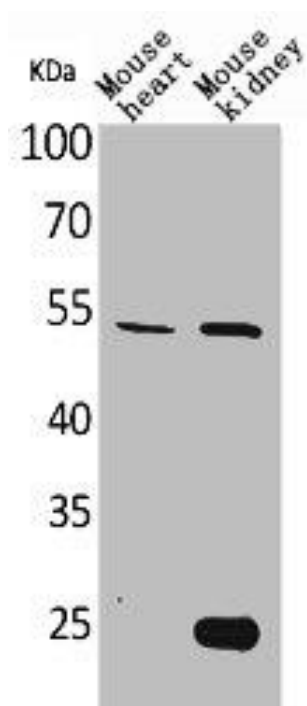
Immunogen:

Synthesized peptide derived from the N-terminal region of human Sg III.

Storage:

Liquid in PBS containing 50% glycerol, 0.5% BSA and 0.02% sodium azide.

Product Images



Western Blot analysis of mouse heart mouse kidney cells using Sg III Polyclonal Antibody.