

CLDN17 Antibody



PACO01850

Product Information

Size:

50ug

Reactivity:

Human

Source:

Rabbit

Isotype:

IgG

Applications:

ELISA, WB

Recommended dilutions:

WB:1:500-1:2000

Protein Background:

Gene ID:

CLDN17

Uniprot

P56750

Synonyms:

CLDN17; Claudin-17

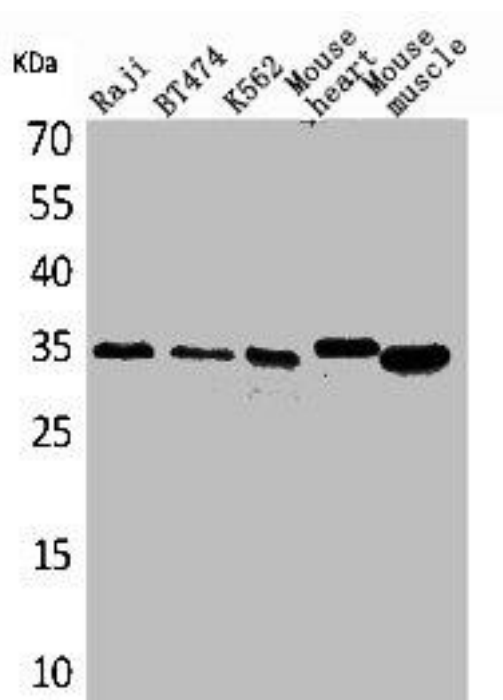
Immunogen:

Synthesized peptide derived from the C-terminal region of human Claudin-17.

Storage:

Liquid in PBS containing 50% glycerol, 0.5% BSA and 0.02% sodium azide.

Product Images



Western Blot analysis of Raji BT474 K562 mouse heart mouse skeletal muscle cells using Claudin-17 Polyclonal Antibody.