

# LXN Antibody



PACO01848

---

## Product Information

**Size:**

50ug

**Reactivity:**

Human, Mouse, Rat

**Source:**

Rabbit

**Isotype:**

IgG

**Applications:**

ELISA, WB

**Recommended dilutions:**

WB:1:500-1:2000

**Protein Background:****Gene ID:**

LXN

**Uniprot**

Q9BS40

**Synonyms:**

LXN; Latexin; Endogenous carboxypeptidase inhibitor; ECI; Protein MUM; Tissue carboxypeptidase inhibitor; TCI

**Immunogen:**

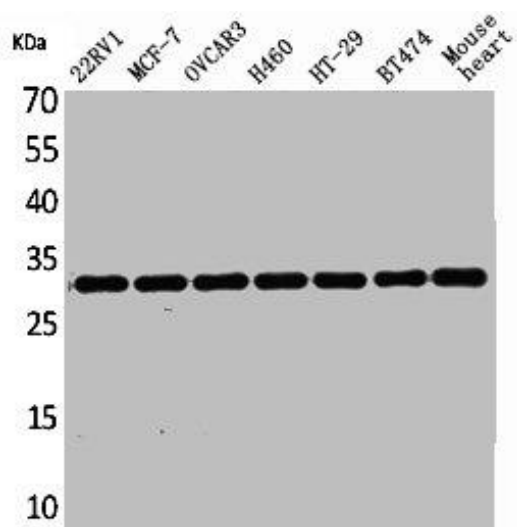
Synthesized peptide derived from the Internal region of human Latexin.

**Storage:**

Liquid in PBS containing 50% glycerol, 0.5% BSA and 0.02% sodium azide.

## Product Images

---



Western Blot analysis of 22RV-1 MCF7 OVCAR3 H460 HT29 BT474 mouse heart cells using Latexin Polyclonal Antibody.