

# TREM1 Antibody



PACO01847

---

## Product Information

**Size:**

50ug

**Reactivity:**

Human

**Source:**

Rabbit

**Isotype:**

IgG

**Applications:**

ELISA, WB

**Recommended dilutions:**

WB:1:500-1:2000

**Protein Background:**

**Gene ID:**

TREM1

**Uniprot**

Q9NP99

**Synonyms:**

TREM1; Triggering receptor expressed on myeloid cells 1; TREM-1; Triggering receptor expressed on monocytes 1; CD354

**Immunogen:**

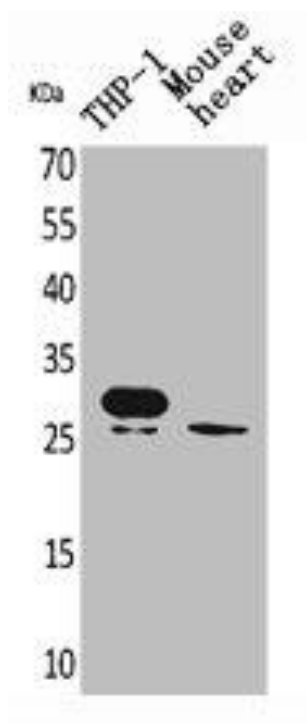
Synthesized peptide derived from the Internal region of human TREM-1.

**Storage:**

Liquid in PBS containing 50% glycerol, 0.5% BSA and 0.02% sodium azide.

## Product Images

---



Western Blot analysis of THP-1 mouse heart cells using TREM-1 Polyclonal Antibody.