

# KLF12 Antibody



PACO01835

---

## Product Information

**Size:**

50ug

**Reactivity:**

Human, Mouse

**Source:**

Rabbit

**Isotype:**

IgG

**Applications:**

ELISA, WB

**Recommended dilutions:**

WB:1:500-1:2000

**Protein Background:**

**Gene ID:**

KLF12

**Uniprot**

Q9Y4X4

**Synonyms:**

KLF12; AP2REP; HSPC122; Krueppel-like factor 12; Transcriptional repressor AP-2rep

**Immunogen:**

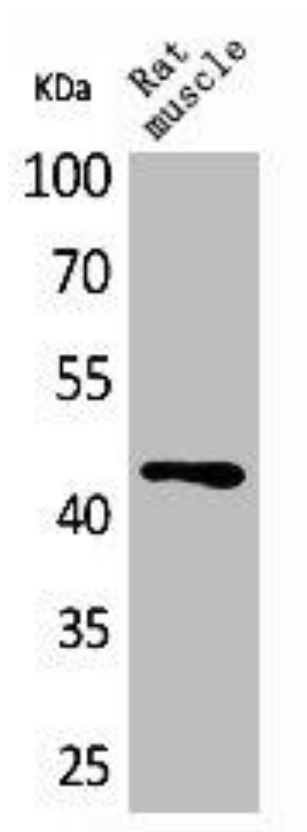
Synthesized peptide derived from the Internal region of human KLF12.

**Storage:**

Liquid in PBS containing 50% glycerol, 0.5% BSA and 0.02% sodium azide.

## Product Images

---



Western Blot analysis of rat muscle cells using KLF12 Polyclonal Antibody.