

SYCP3 Antibody



PACO01834

Product Information

Size:

50ug

Reactivity:

Human, Mouse

Source:

Rabbit

Isotype:

IgG

Applications:

ELISA, WB

Recommended dilutions:

WB:1:500-1:2000

Protein Background:

Gene ID:

SYCP3

Uniprot

Q8IZU3

Synonyms:

SYCP3; SCP3; Synaptonemal complex protein 3; SCP-3

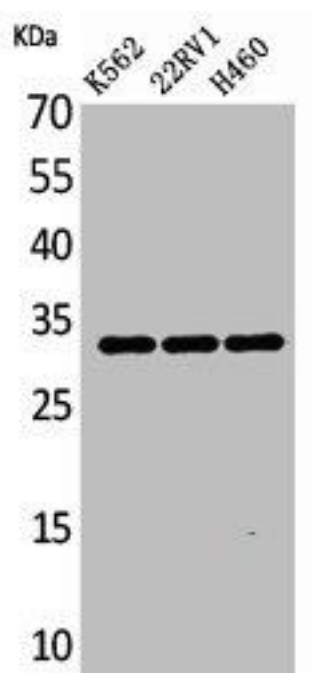
Immunogen:

Synthesized peptide derived from the Internal region of human SCP-3.

Storage:

Liquid in PBS containing 50% glycerol, 0.5% BSA and 0.02% sodium azide.

Product Images



Western Blot analysis of K562 22RV-1 H460 cells using SCP-3 Polyclonal Antibody.