

LIF Antibody



PACO01825

Product Information

Size:

50ug

Reactivity:

Human

Source:

Rabbit

Isotype:

IgG

Applications:

ELISA, WB

Recommended dilutions:

WB:1:500-1:2000

Protein Background:

Gene ID:

LIF

Uniprot

P15018

Synonyms:

LIF; HILDA; Leukemia inhibitory factor; LIF; Differentiation-stimulating factor; D factor; Melanoma-derived LPL inhibitor; MLPLI; Emfilermin

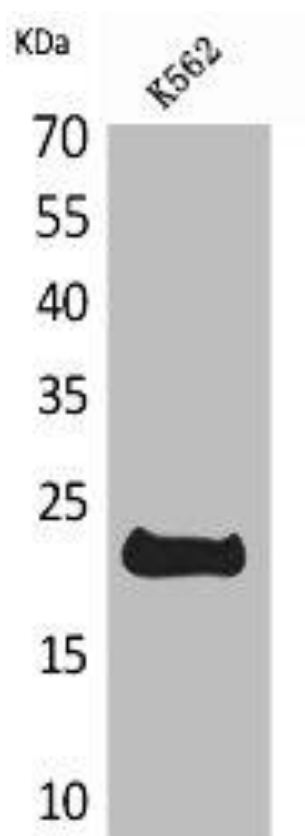
Immunogen:

Synthesized peptide derived from the C-terminal region of human LIF.

Storage:

Liquid in PBS containing 50% glycerol, 0.5% BSA and 0.02% sodium azide.

Product Images



Western Blot analysis of K562 cells using LIF Polyclonal Antibody.