

IFNLR1 Antibody



PACO01807

Product Information

Size:

50ug

Reactivity:

Human

Source:

Rabbit

Isotype:

IgG

Applications:

ELISA, WB

Recommended dilutions:

WB:1:500-1:2000

Protein Background:

Gene ID:

IFNLR1

Uniprot

Q8IU57

Synonyms:

IL28RA; IFNLR1; LICR2; Interleukin-28 receptor subunit alpha; IL-28 receptor subunit alpha; IL-28R-alpha; IL-28RA; Cytokine receptor class-II member 12; Cytokine receptor family 2 member 12;

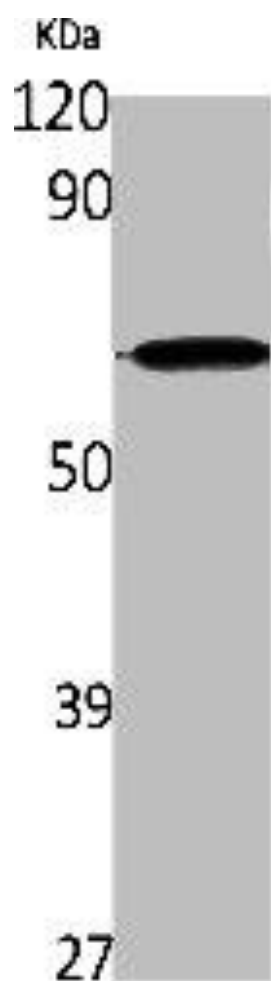
Immunogen:

Synthesized peptide derived from the Internal region of human IL-28Ralpha.

Storage:

Liquid in PBS containing 50% glycerol, 0.5% BSA and 0.02% sodium azide.

Product Images



Western Blot analysis of K562 cells using IL-28Ralpha Polyclonal Antibody.