

# TCF19 Antibody



PACO01796

---

## Product Information

**Size:**

50ug

**Reactivity:**

Human, Mouse, Rat

**Source:**

Rabbit

**Isotype:**

IgG

**Applications:**

ELISA, WB

**Recommended dilutions:**

WB:1:500-1:2000

**Protein Background:**

**Gene ID:**

TCF19

**Uniprot**

Q9Y242

**Synonyms:**

TCF19; SC1; Transcription factor 19; TCF-19; Transcription factor SC1

**Immunogen:**

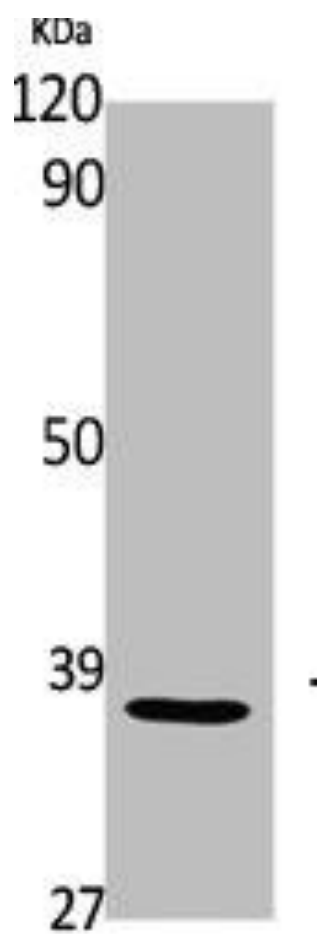
Synthesized peptide derived from the Internal region of human TCF-19.

**Storage:**

Liquid in PBS containing 50% glycerol, 0.5% BSA and 0.02% sodium azide.

## Product Images

---



Western Blot analysis of Jurkat cells using TCF-19 Polyclonal Antibody.