

# APOL6 Antibody



PACO01778

---

## Product Information

**Size:**

50ug

**Reactivity:**

Human

**Source:**

Rabbit

**Isotype:**

IgG

**Applications:**

ELISA, WB

**Recommended dilutions:**

WB:1:500-1:2000

**Protein Background:**

**Gene ID:**

APOL6

**Uniprot**

Q9BWW8

**Synonyms:**

APOL6; Apolipoprotein L6; Apolipoprotein L-VI; ApoL-VI

**Immunogen:**

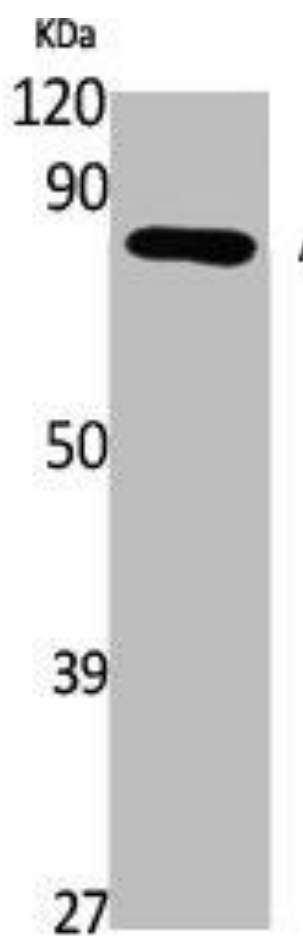
Synthesized peptide derived from the C-terminal region of human ApoL6.

**Storage:**

Liquid in PBS containing 50% glycerol, 0.5% BSA and 0.02% sodium azide.

## Product Images

---



Western Blot analysis of K562 cells using ApoL6 Polyclonal Antibody.