

# ZNF608 Antibody



PACO01731

---

## Product Information

**Size:**

50ug

**Reactivity:**

Human, Mouse

**Source:**

Rabbit

**Isotype:**

IgG

**Applications:**

ELISA, WB, IHC

**Recommended dilutions:**

WB:1:500-1:2000, IHC:1:100-1:300

**Protein Background:**

**Gene ID:**

ZNF608

**Uniprot**

Q9ULD9

**Synonyms:**

ZNF608; KIAA1281; Zinc finger protein 608; Renal carcinoma antigen NY-REN-36

**Immunogen:**

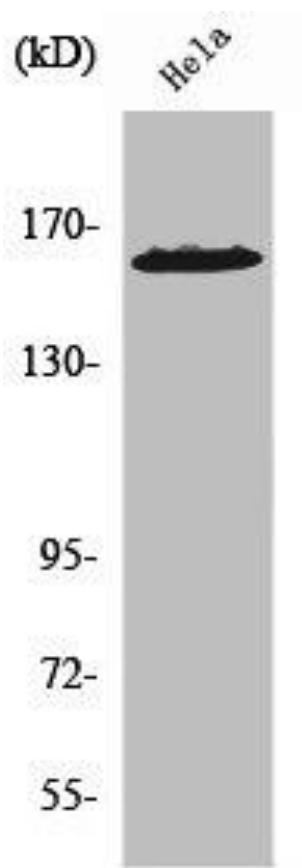
Synthesized peptide derived from the C-terminal region of human ZNF608.

**Storage:**

Liquid in PBS containing 50% glycerol, 0.5% BSA and 0.02% sodium azide.

## Product Images

---



Western Blot analysis of HeLa cells using ZNF608 Polyclonal Antibody.