

# ZRANB2 Antibody



PACO01723

---

## Product Information

**Size:**

50ug

**Reactivity:**

Human, Mouse, Rat

**Source:**

Rabbit

**Isotype:**

IgG

**Applications:**

ELISA, WB, IHC, IF

**Recommended dilutions:**

WB:1:500-1:2000, IHC:1:100-1:300,  
IF:1:200-1:1000

**Protein Background:****Gene ID:**

ZRANB2

**Uniprot**

O95218

**Synonyms:**

ZRANB2; ZIS; ZNF265; Zinc finger Ran-binding domain-containing protein 2; Zinc finger protein 265; Zinc finger; splicing

**Immunogen:**

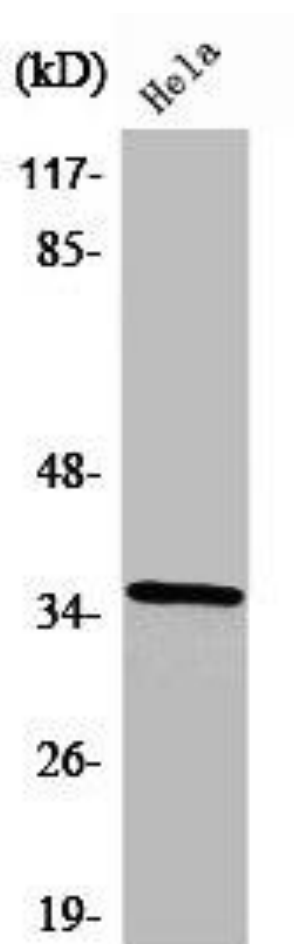
Synthesized peptide derived from the Internal region of human ZIS.

**Storage:**

Liquid in PBS containing 50% glycerol, 0.5% BSA and 0.02% sodium azide.

## Product Images

---



Western Blot analysis of HeLa cells using ZIS Polyclonal Antibody.