

ZC3H13 Antibody



PACO01719

Product Information

Size:

50ug

Reactivity:

Human, Mouse

Source:

Rabbit

Isotype:

IgG

Applications:

ELISA, WB

Recommended dilutions:

WB:1:500-1:2000

Protein Background:

Gene ID:

ZC3H13

Uniprot

Q5T200

Synonyms:

ZC3H13; KIAA0853; Zinc finger CCCH domain-containing protein 13

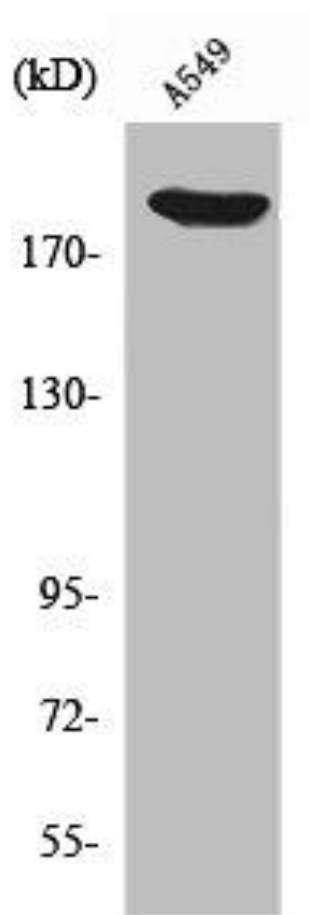
Immunogen:

Synthesized peptide derived from the C-terminal region of human ZC3H13.

Storage:

Liquid in PBS containing 50% glycerol, 0.5% BSA and 0.02% sodium azide.

Product Images



Western Blot analysis of HepG2 cells using ZC3H13 Polyclonal Antibody.